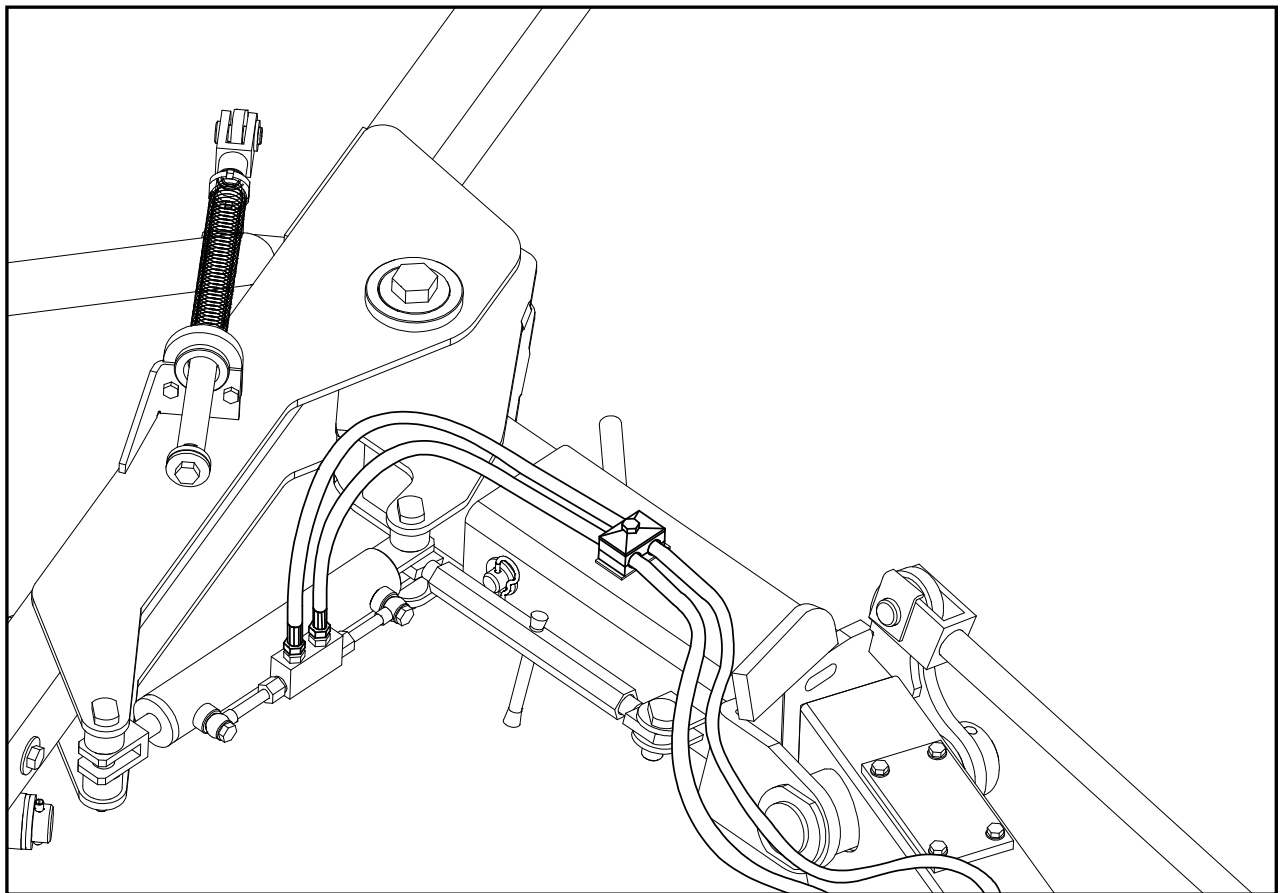


AGRICULTURAL MACHINERY
sitrex®
Spa

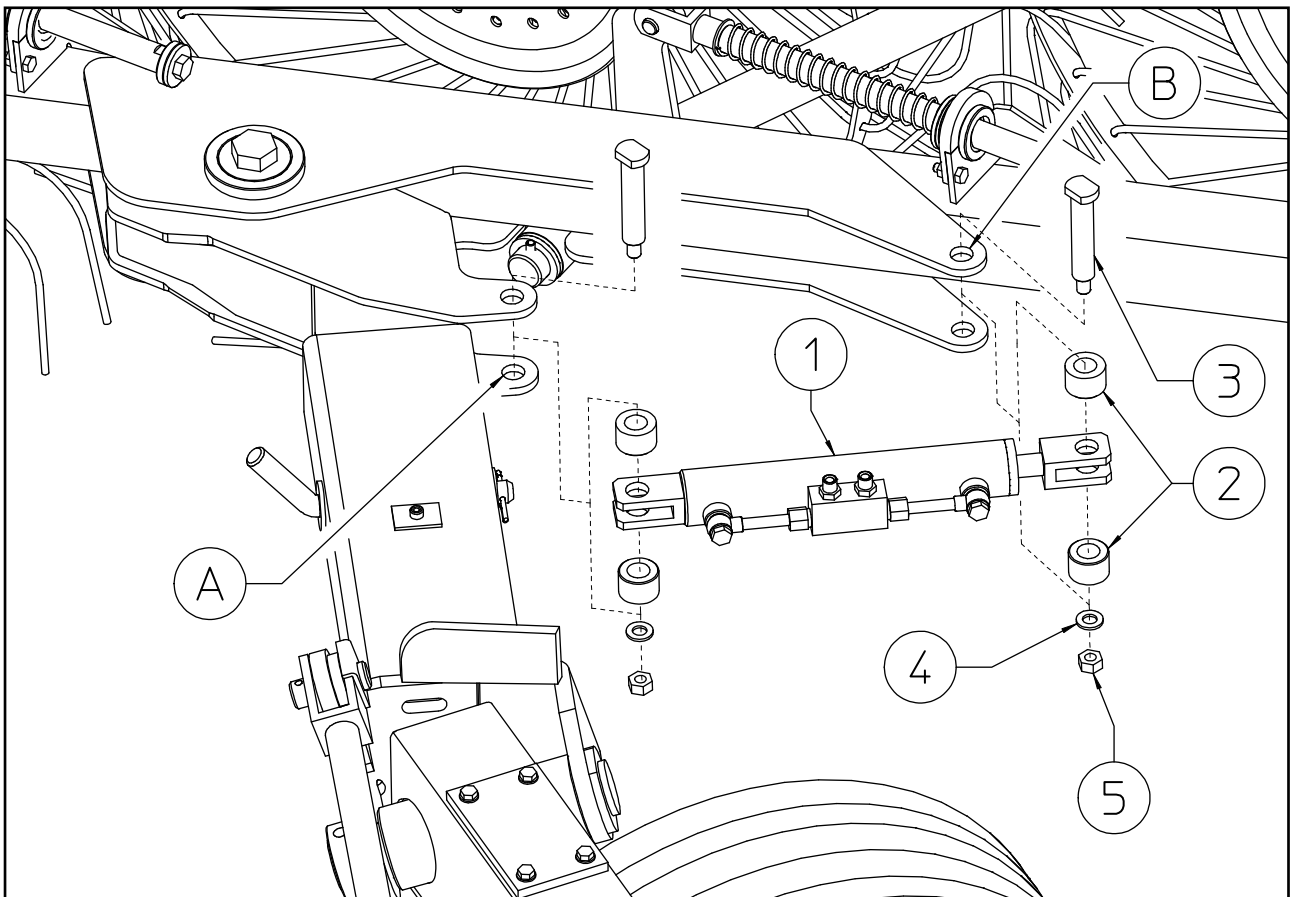
ASSEMBLY SPARE PARTS LIST



**HYDRAULIC OPENING KIT QR / 8-10-12
(OPTIONAL)**

DANGER. Assembly must be done carefully and accurately, for the safety of the person(s) doing the assembling and to ensure proper machine operation. Assembly should be done on a flat, solid surface, using the proper tools and wearing suitable clothing, making sure that all people not involved in the assembly be kept at a safe distance.

HYDRAULIC OPENING KIT (OPTIONAL)



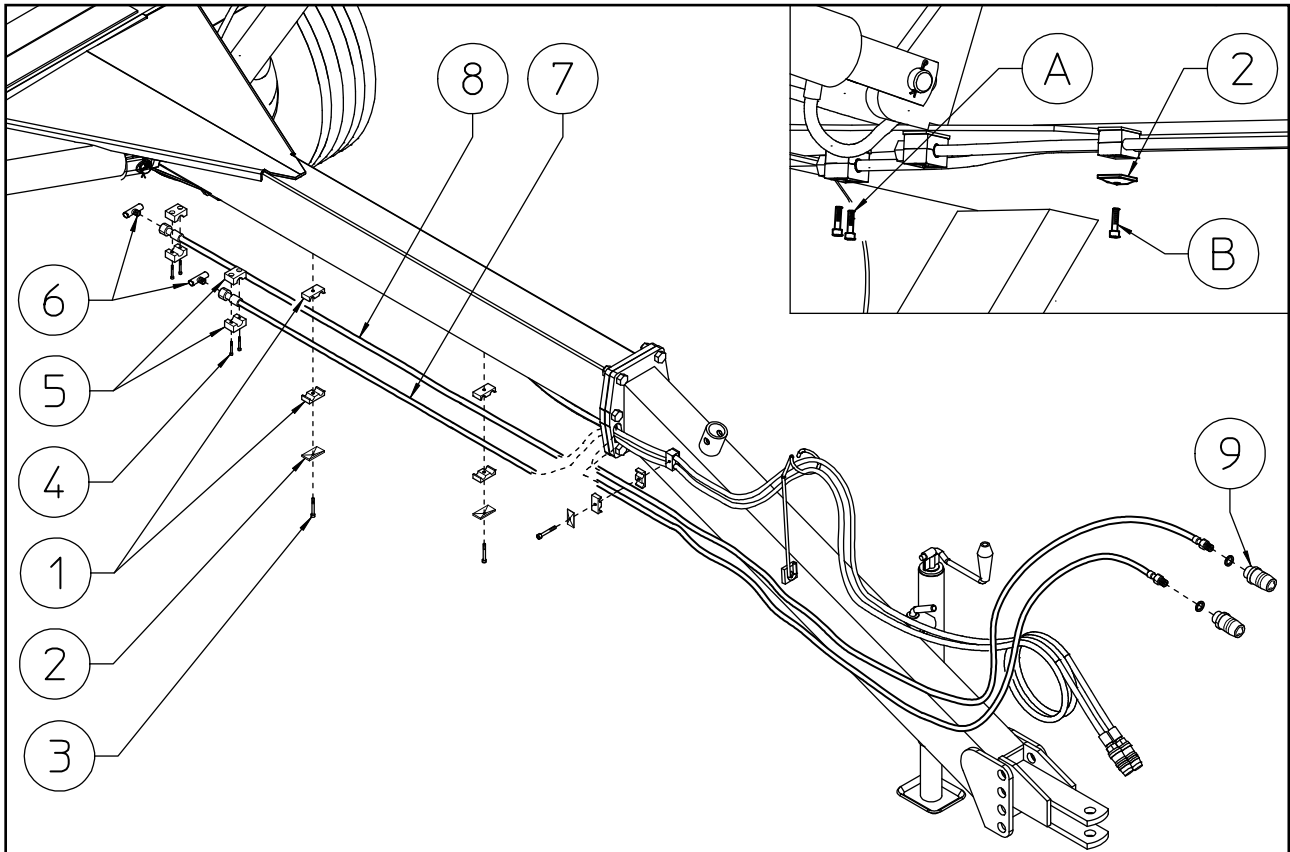
Attach the cylinder at points (A) and (B) using the pins (3), spacers (2), washers (4) and nuts (5). Fasten it first at point (A) then rotate the section until the cylinder holes line up with point (B), then insert the spacers (2) and the fastening pin (3) and lock in place with the washer (4) and nut (5). Repeat the operation on the opposite side.

Item (2): 4+4 bush $\varnothing 20.5/34 \times 23$

Item (3): 2+2 pins $\varnothing 20 \times 125$

Item (4): 2+2 washers $\varnothing 17$

Item (5): 2+2 nuts M16



Attach the male T connectors (6) to the hoses (7-8).

Remove the screws (A) (which will not be used anymore), then attach the hoses (7-8) on the same spot and fasten them using the hose collars (5) and the screws (4).

Remove the screws (B) which will not be used anymore and the plates (2), pull the hoses (7-8) taut and fasten them in the proper places using the double hose collars (1), the plats already used (2) and the screws (3). Insert the hoses through the proper opening of the drawbar joint plates and, keeping them taut fasten them again on the same spot.

Attach the quick couplings (9) to the hoses (7-8).

In this step, you use:

Item 1: 6 double hose collars $\varnothing 16$ (5/8")

Item 2: 3 plat

Item 3: 3 screw M8x60 DIN 931 (0.3"x 2.3")

Item 4: 4 screw M6x60 DIN 912 (15/64"x 2.3")

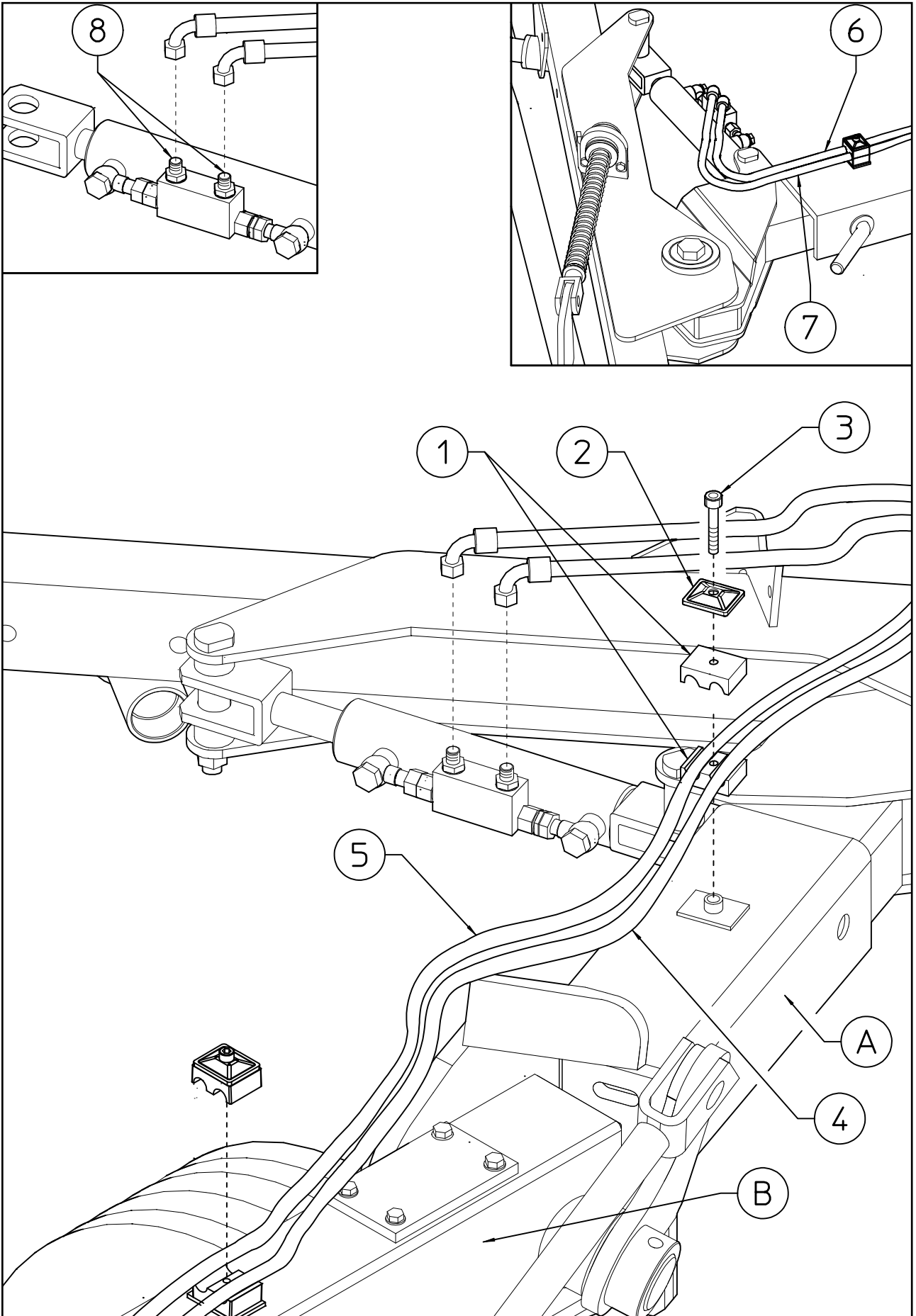
Item 5: 4 hose collar $\varnothing 14$ (0.55")

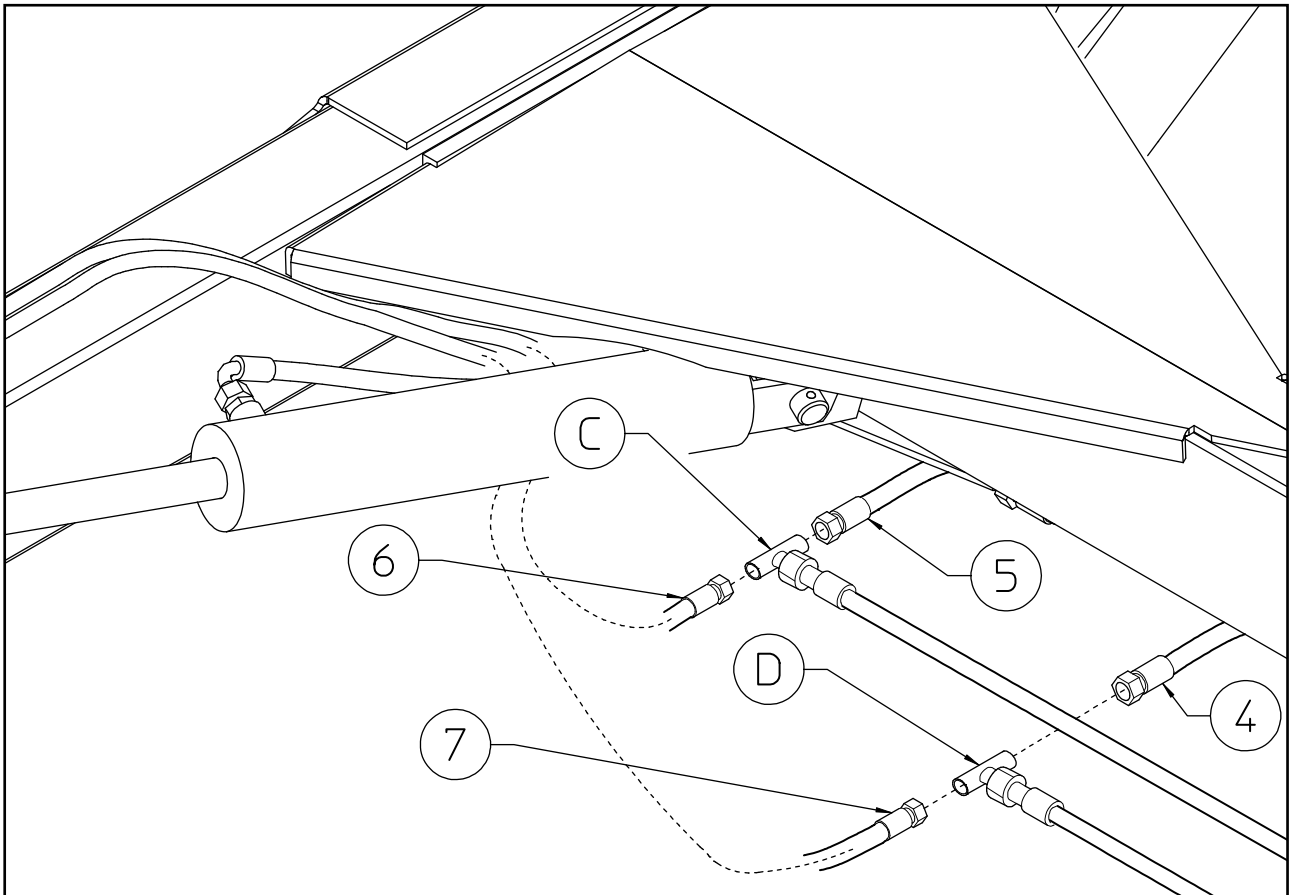
Item 6: 2 male T connector 1/4"

Item 7: 1 hose 1/4" lenght 4950mm (194.88")

Item 8: 1 hose 1/4" lenght 5100mm (200.78")

Item 9: 2 rapid coupling 1/2"





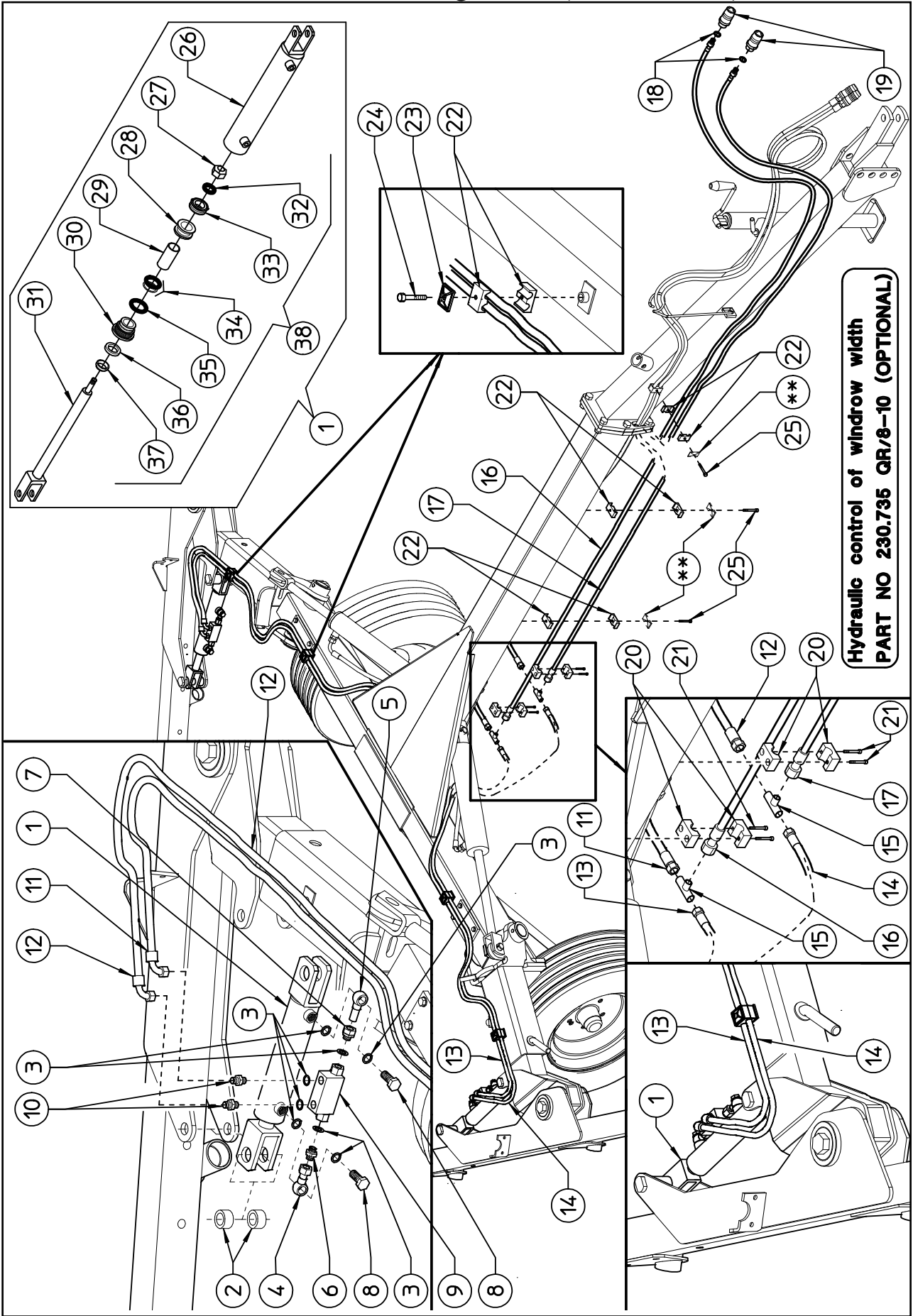
Mount the hoses (4-5-6-7) to the connectors (C-D). At this stage, keeping the hoses well extended, fasten them by means of the double hose collars (1), plates (2) and screws (3) to the main frame (B) and to the sliding arm (A). Finally, screw the hoses (4-5-6-7) to the cylinders nipples (8).

In this step, you will use:

- Item (1): 8 double hose collars $\varnothing 16$ (5/8")
- Item (2): 4 plats
- Item (3): 4 screws M8x35 (0.3"x1.37")
- Item (4): 1 hose $\frac{1}{4}$ " length 2150mm (84.65")
- Item (5): 1 hose $\frac{1}{4}$ " length 1900mm (74.80")
- Item (6): 1 hose $\frac{1}{4}$ " length 2000mm (78.74")
- Item (7): 1 hose $\frac{1}{4}$ " length 2050mm (80.71")

SPARE PARTS LIST

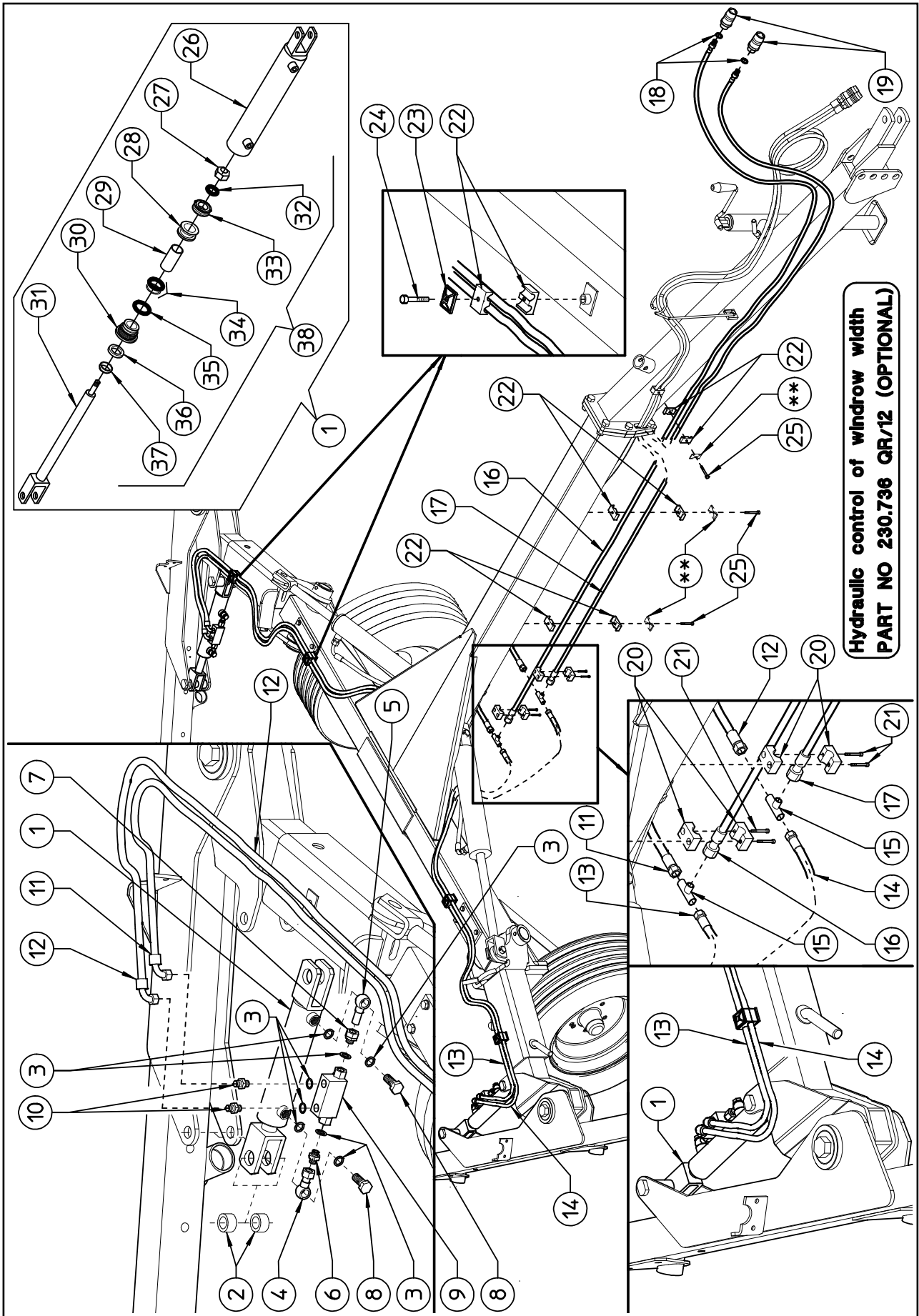
PART NO 230.735 QR/8-10 (OPTIONAL)



**Hydraulic control of windrow width
PART NO 230.735 QR/8-10 (OPTIONAL)**

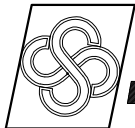
HYDRAULIC CONTROL OF WINDROW WIDTH QR/8-10 - PART NO 230.735 (OPTIONAL)				
ITEM	Q.ty	PART NO	DESCRIPTION	NOTE
1	2	230.383	CYLINDER	
2	4	230.377	BUSH	
3	16	630.376	COPPER WASHER ϕ 1/4"	
4	2	630.332	FITTING 1/4"	
5	2	230.412	TUBE	
6	2	630.331	NIPPLE 1/4"-1/4" WITH ORIFICE 0,6	
7	2	630.334	FITTING MALE 1/4" FEMALE ϕ 12	
8	4	600.820	FITTING 1/4"	
9	2	630.333	LOCK VALVE 1/4"	
10	4	630.320	NIPPLE 1/4"-1/4"	
11	1	630.629	HOSE R2 AT 1/4" LENGHT 1900mm-74,80"	
12	1	630.630	HOSE R2 AT 1/4" LENGHT 2150mm-84,65"	
13	1	630.627	HOSE R2 AT 1/4" LENGHT 2000mm-78,74"	
14	1	630.628	HOSE R2 AT 1/4" LENGHT 2050mm-80,71"	
15	2	600.823	FITTING MALE 1/4"	
16	1	630.621	HOSE R2 AT 1/4" LENGHT 4300mm-169,29"	
17	1	630.622	HOSE R2 AT 1/4" LENGHT 4150mm-163,38"	
18	2	630.048	COPPER WASHER ϕ 1/2"	
19	2	600.273	RAPID COUPLING 1/2"	
20	4	610.035	HOSE COLLAR	
21	4	610.901	SCREW M6x60 DIN 912	
22	14	630.457	DOUBLE HOSE COLLAR	
23	4	610.164	COLLAR CLAMP	
24	4	610.165	SCREW M8x35 DIN 931	
25	3	610.525	SCREW M8x60 DIN 931	
26	2	230.409	CYLINDER BARREL ϕ 40/50	
27	2	600.121	NUT M18x1,5 DIN 985	
28	2	230.397	PISTON ϕ 40	
29	2	230.411	SPACER	
30	2	230.398	HEAD ϕ 40/20	
31	2	230.410	ROD ϕ 20	
32	2	630.322	GASKET OR ϕ 12,34x2,62	
33	2	610.028	GASKET DBM 157118	
34	2	630.321	GASKET OR ϕ 36,14x2,62 + BK	
35	2	630.323	GASKET OR ϕ 39,34x2,62	
36	2	630.324	GASKET ϕ 20/28x5,8	
37	2	610.025	GASKET WRM 078110	
38	2	630.325	SET OF GASKET	
**	USE THE PIECES ALL READY FITTED ON THE MACHINE			

PART NO 230.736 QR/12 (OPTIONAL)



**Hydraulic control of windrow width
PART NO 230.736 QR/12 (OPTIONAL)**

HYDRAULIC CONTROL OF WINDROW WIDTH QR/12 - PART NO 230.736 (OPTIONAL)				
ITEM	Q.ty	PART NO	DESCRIPTION	NOTE
1	2	230.383	CYLINDER	
2	4	230.377	BUSH	
3	16	630.376	COPPER WASHER ϕ 1/4"	
4	2	630.332	FITTING 1/4"	
5	2	230.412	TUBE	
6	2	630.331	NIPPLE 1/4"-1/4" WITH ORIFICE 0,6	
7	2	630.334	FITTING MALE 1/4" FEMALE ϕ 12	
8	4	600.820	FITTING 1/4"	
9	2	630.333	LOCK VALVE 1/4"	
10	4	630.320	NIPPLE 1/4"-1/4"	
11	1	630.629	HOSE R2 AT 1/4" LENGHT 1900mm-74,80"	
12	1	630.630	HOSE R2 AT 1/4" LENGHT 2150mm-84,65"	
13	1	630.627	HOSE R2 AT 1/4" LENGHT 2000mm-78,74"	
14	1	630.628	HOSE R2 AT 1/4" LENGHT 2050mm-80,71"	
15	2	600.823	FITTING MALE 1/4"	
16	1	630.625	HOSE R2 AT 1/4" LENGHT 5100mm-200,78"	
17	1	630.626	HOSE R2 AT 1/4" LENGHT 4950mm-194,88"	
18	2	630.048	COPPER WASHER ϕ 1/2"	
19	2	600.273	RAPID COUPLING 1/2"	
20	4	610.035	HOSE COLLAR	
21	4	610.901	SCREW M6x60 DIN 912	
22	14	630.457	DOUBLE HOSE COLLAR	
23	4	610.164	COLLAR CLAMP	
24	4	610.165	SCREW M8x35 DIN 931	
25	3	610.525	SCREW M6x60 DIN 931	
26	2	230.409	CYLINDER BARREL ϕ 40/50	
27	2	600.121	NUT M18x1,5 DIN 985	
28	2	230.397	PISTON ϕ 40	
29	2	230.411	SPACER	
30	2	230.398	HEAD ϕ 40/20	
31	2	230.410	ROD ϕ 20	
32	2	630.322	GASKET OR ϕ 12,34x2,62	
33	2	610.028	GASKET DBM 157118	
34	2	630.321	GASKET OR ϕ 36,14x2,62 + BK	
35	2	630.323	GASKET OR ϕ 39,34x2,62	
36	2	630.324	GASKET ϕ 20/28x5,8	
37	2	610.025	GASKET WRM 078110	
38	2	630.325	SET OF GASKET	
**	USE THE PIECES ALL READY FITTED ON THE MACHINE			



AGRICULTURAL MACHINERY
sitrex® SpA .

Zona Industriale-Viale Grecia, 8
06018 TRESTINA-(Perugia)-ITALY
Tel. +39.075.8540021-Telefax +39.075.8540523
e-mail: sitrex@sitrex.it www.sitrex.com

